

# Radiant Source Model Report

## Source Model Information

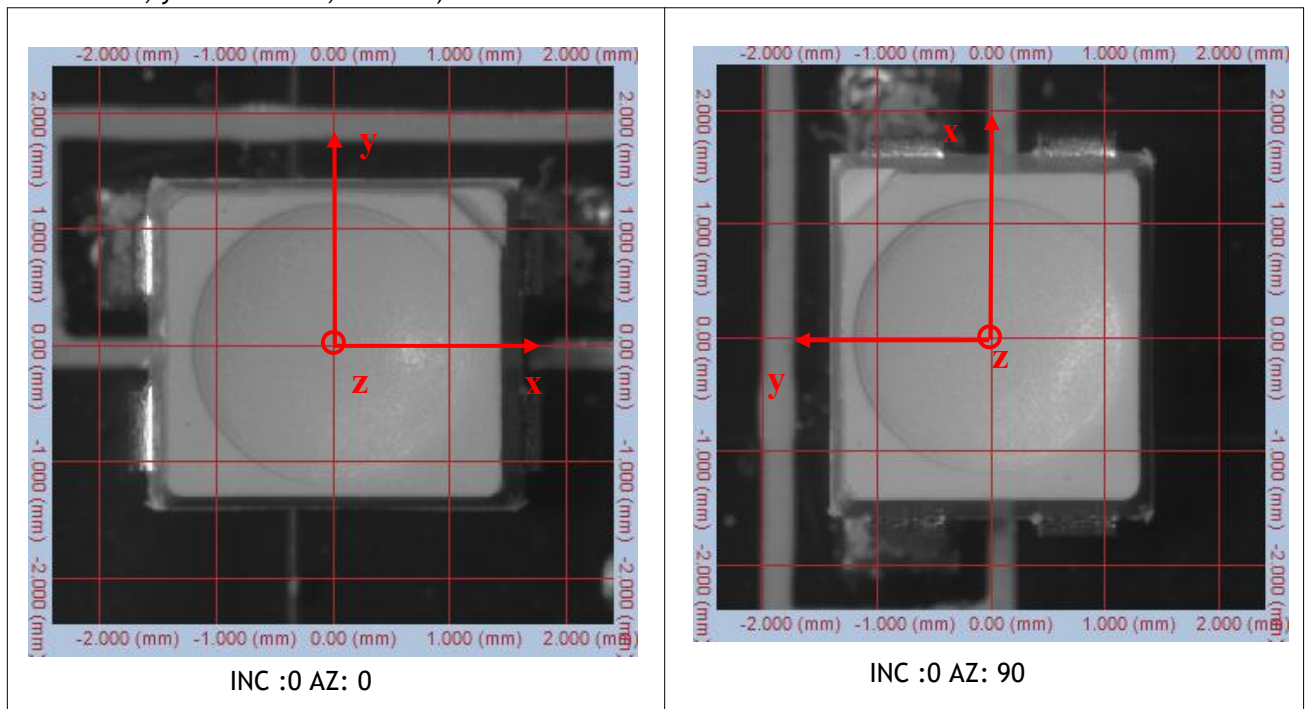
<b>Source Description</b> Product ID: Source Type: LED Model Number: A31-WYS8-A4 Serial Number: Manufacturer: Seoul semiconductor Hours Burned: 30min M.Rated Watts (E-in):M.Rated Lumens: measurement Type: Photometric SIG Orientation: SIG400: VerticalVoltage Source Description Notes:	<b>Scan Environment</b> Applied (volts): 3.14V Current Applied (amps): 50mA Watts Measured: 0.16W Cx: 0.5754 Cy: 0.4157 $\phi$ :15.31 lm  <b>Scan Results</b> Date Scanned: 13-Mar-2024 Number of Measurements: 2736 Azimuth Range: 0 to 90, Step 5 Polar Range: 0 to 360, Step 5 Rated Lumens/Watts:25.5 lm/W
---	---

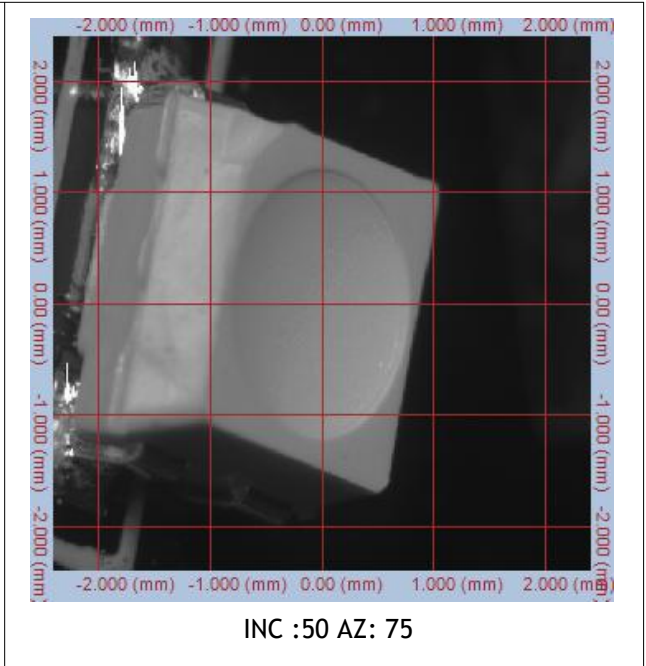
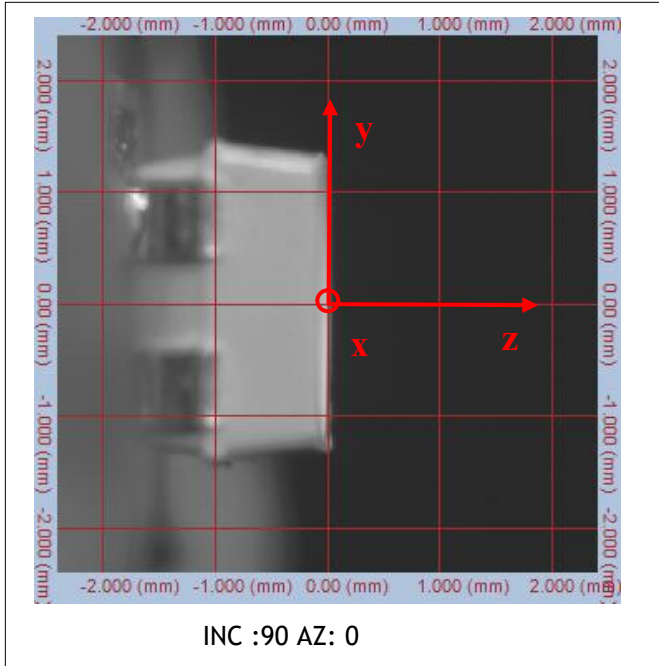
## Alignment Images

Test Origin Coordinate Chart

(The deviation of the position of the luminescent center relative to the center of the bracket.

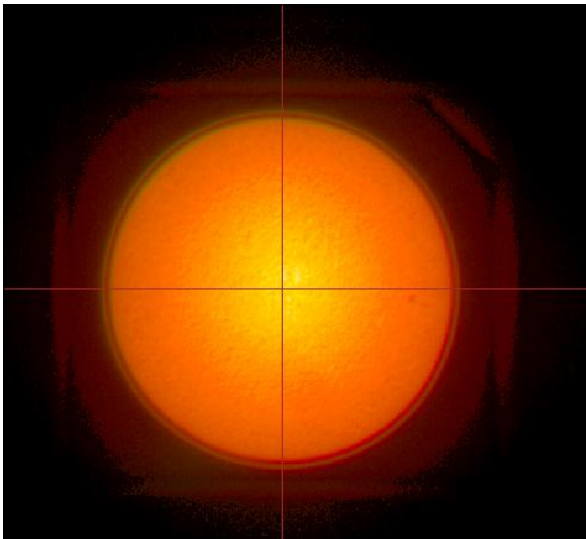
x= 0mm, y=-0.0255 mm, z= 0mm)



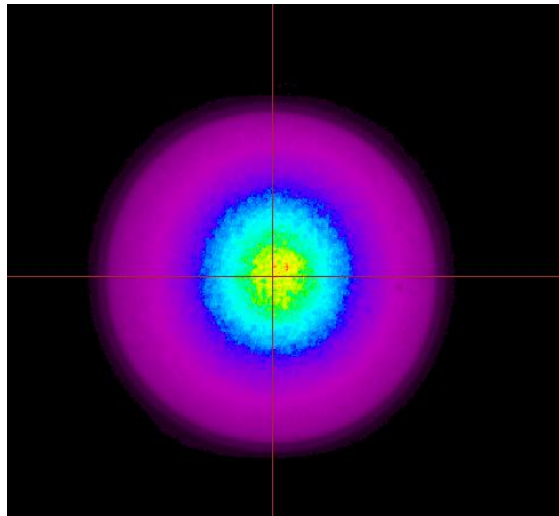


## Summary of Test Results

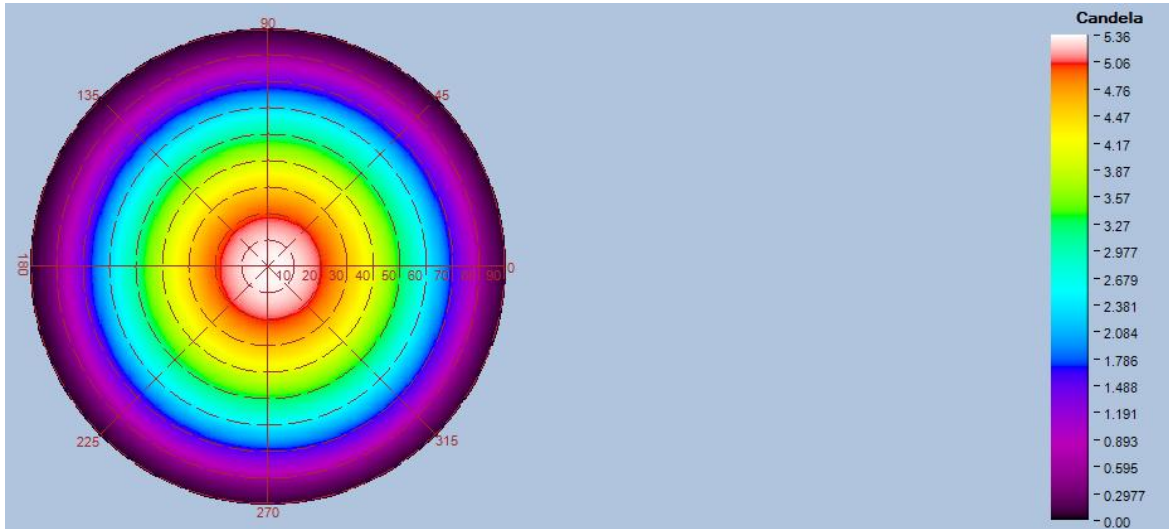
Top-View True Color Image



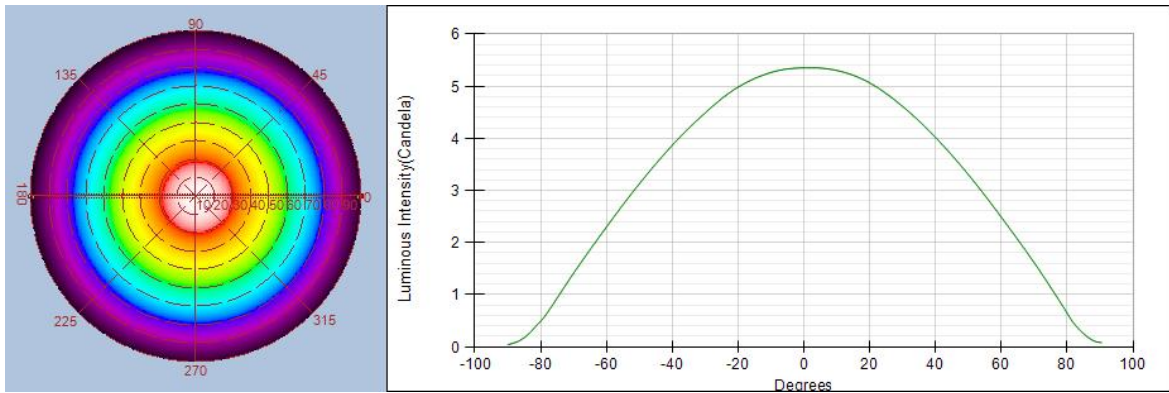
Top-View Luminance Image



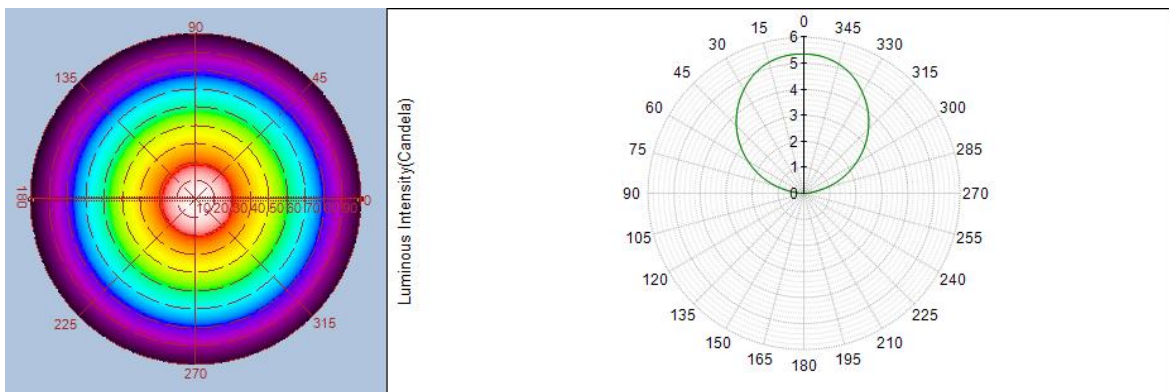
### Near Field Radar Bitmap



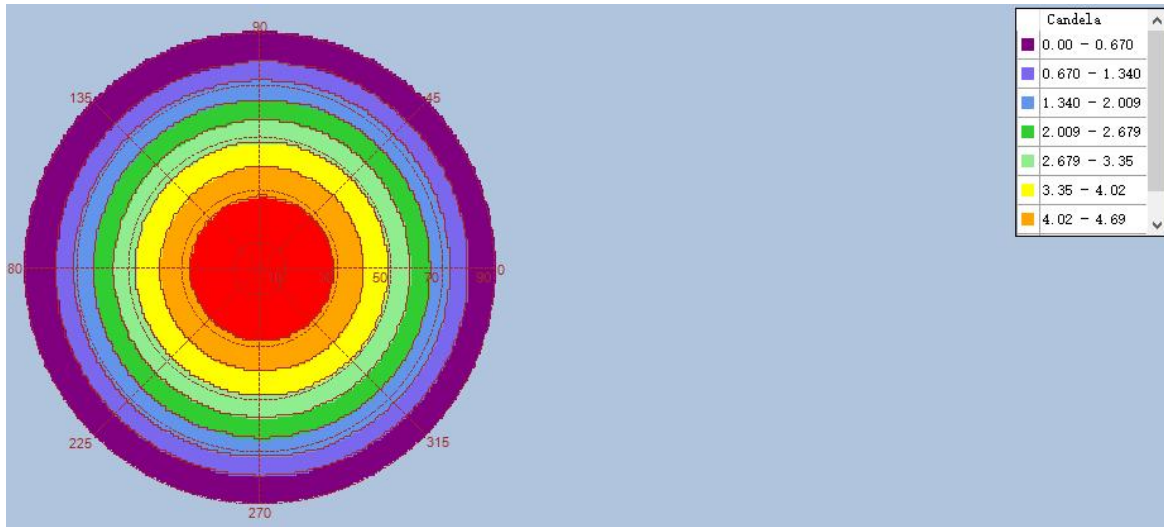
### Intensity(traced to infinity) Cross Section Luminous Intensity(Candela)



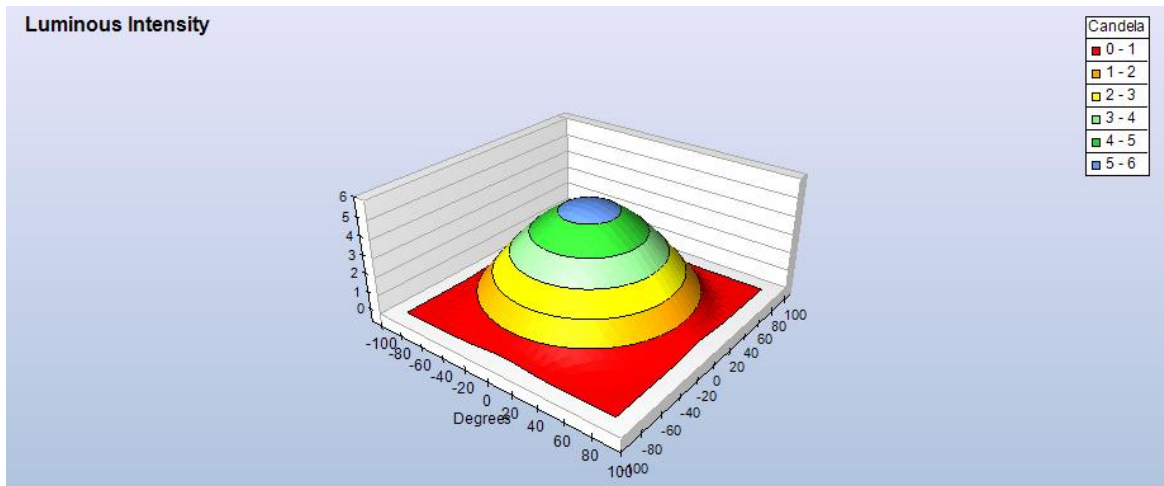
### Intensity(traced to infinity) Cross Section Luminous Intensity(Candela)



Intensity(traced to infinity) Iso-Plot



Intensity(traced to infinity) 3D Iso-Plot



-END-