

# Radiant Source Model Report

## Source Model Information

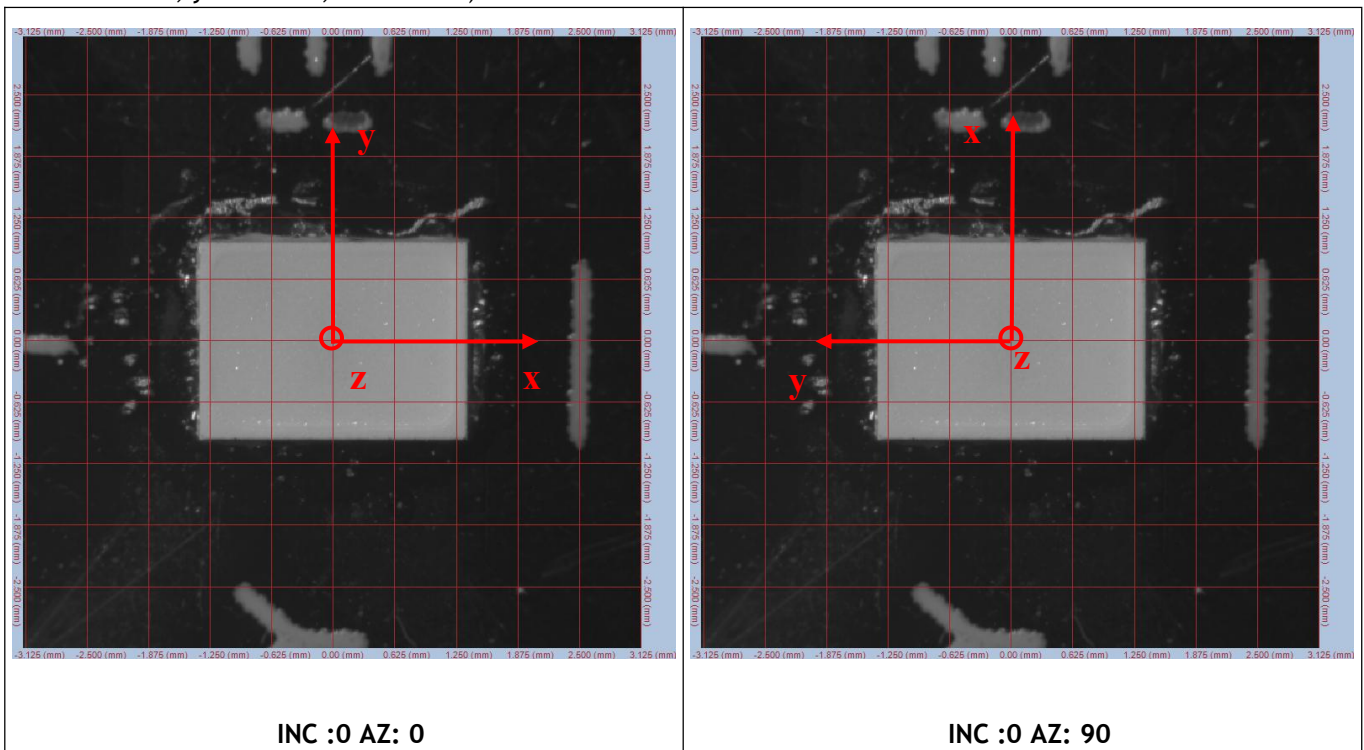
<b>Source Description</b> Product ID: Source Type: LED Model Number: RF-A3E27-WYSE-** Serial Number: Manufacturer: REFOND  Source Description Notes:	<b>Scan Environment</b> measurement Type: Photometric SIG Orientation: SIG400/ Vertical Applied (volts): 3.41V Current Applied (amps): 150mA Watts Measured: 0.51W Cx: 0.5770 Cy: 0.4141 $\phi$ :41.40 lm  <b>Scan Results</b> Date Scanned: 10-Sep-2023 Number of Measurements: 2736 Azimuth Range: 0 to 90, Step 5 Polar Range: 0 to 360, Step 5 Rated Lumens/Watts:81 lm/W
---	--

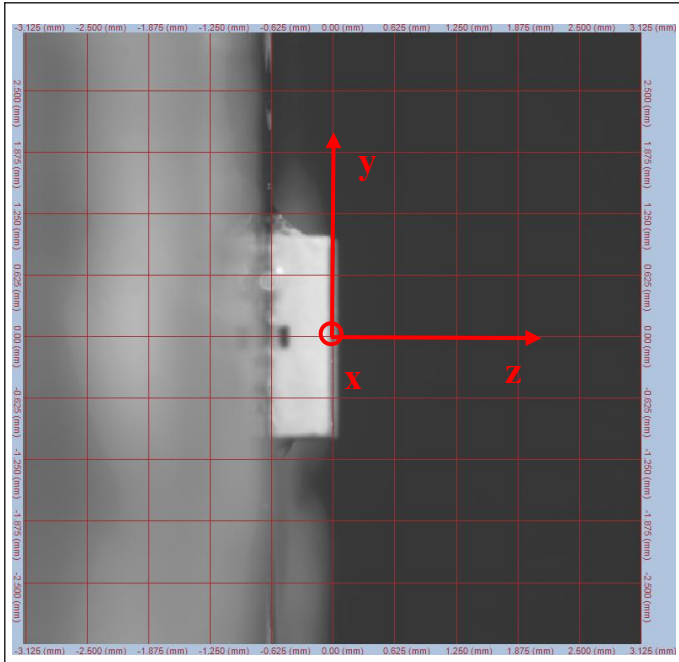
## Alignment Images

### Test Origin Coordinate Chart

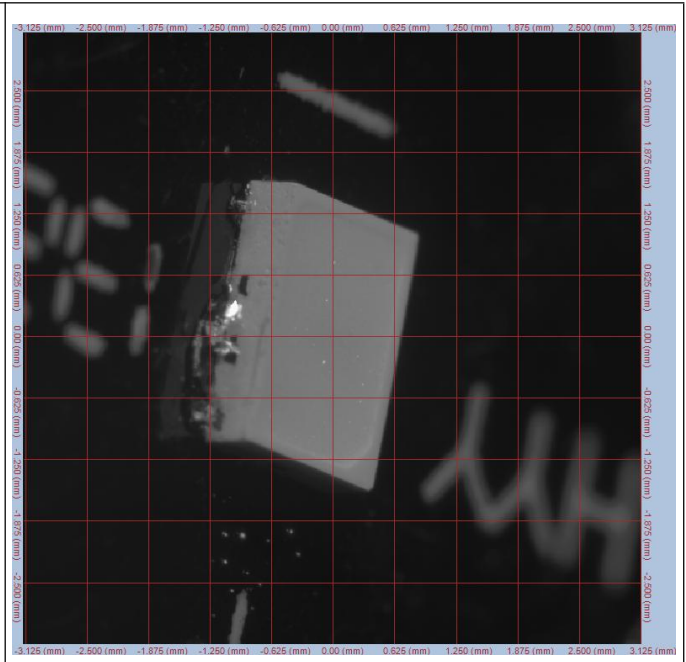
(The deviation of the position of the luminescent center relative to the center of the bracket.)

x=0.00mm, y=0.00 mm, z= 0.00mm)





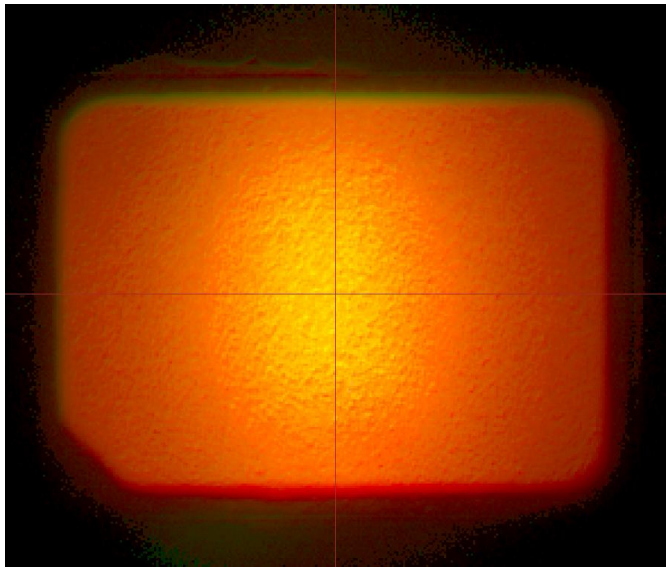
INC :90 AZ: 0



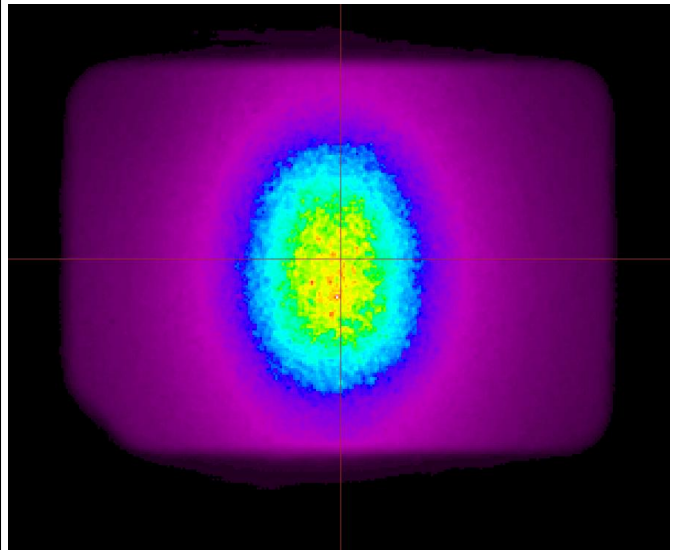
INC :50 AZ: 75

## Summary of Test Results

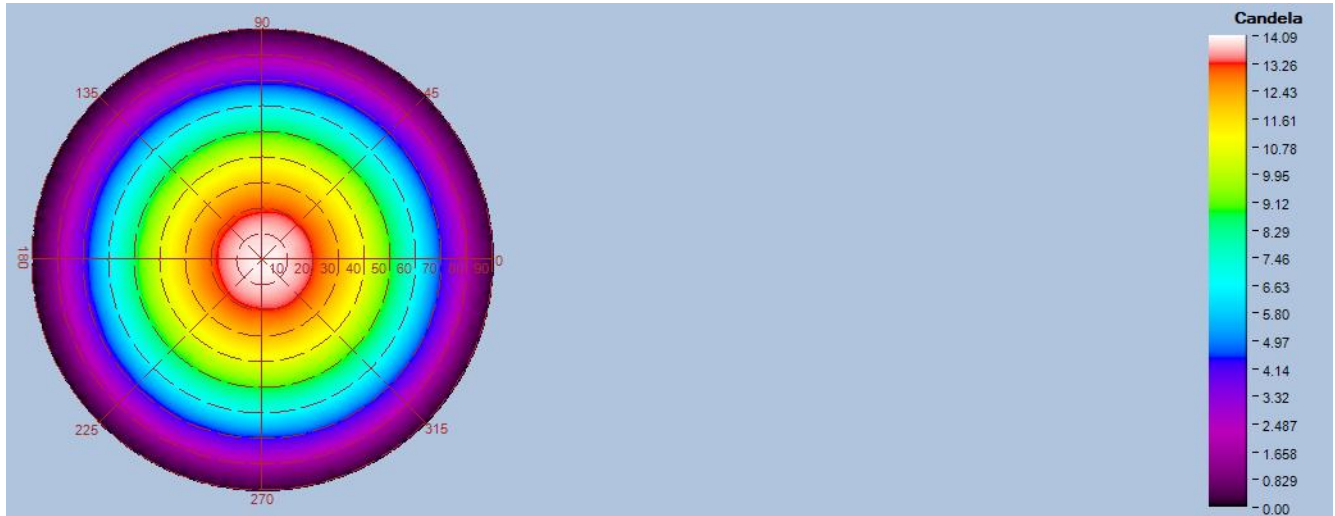
Top-View True Color Image



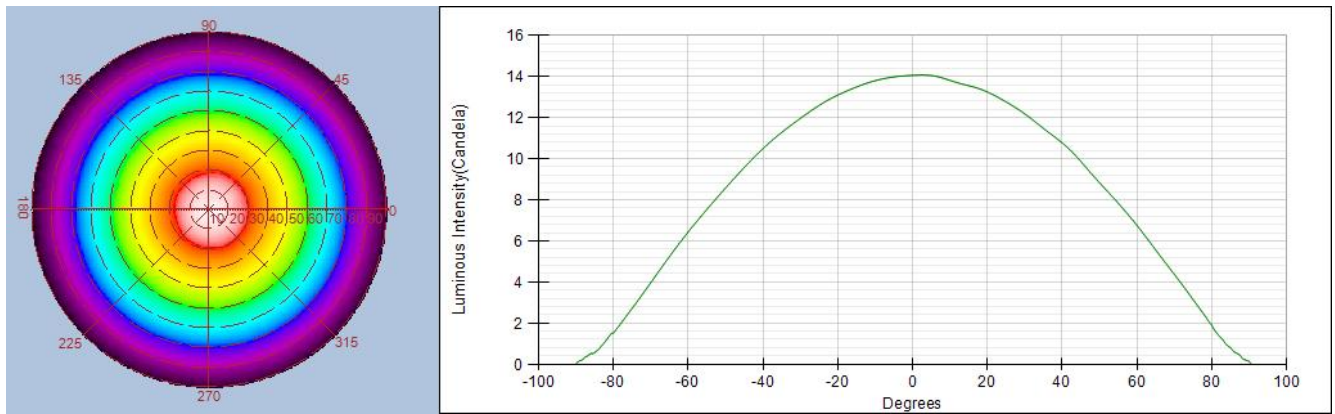
Top-View Luminance Image



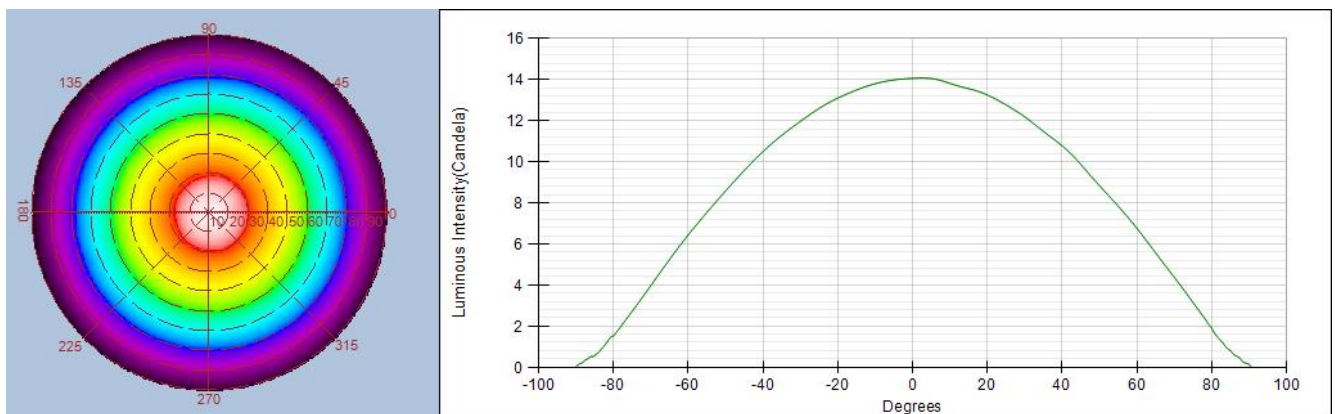
**Intensity(traced to infinity)**



**Intensity(traced to infinity) Cross Section Luminous Intensity(Candela)**



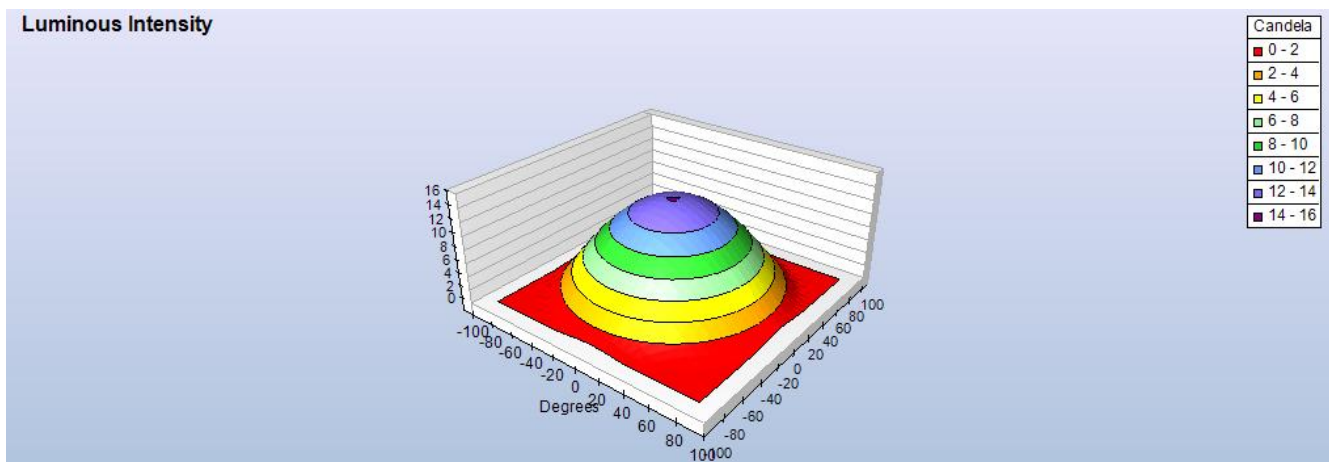
**Intensity(traced to infinity) Cross Section Luminous Intensity(Candela)**



### Intensity(traced to infinity) Iso-Plot



### Intensity(traced to infinity) 3D Iso-Plot

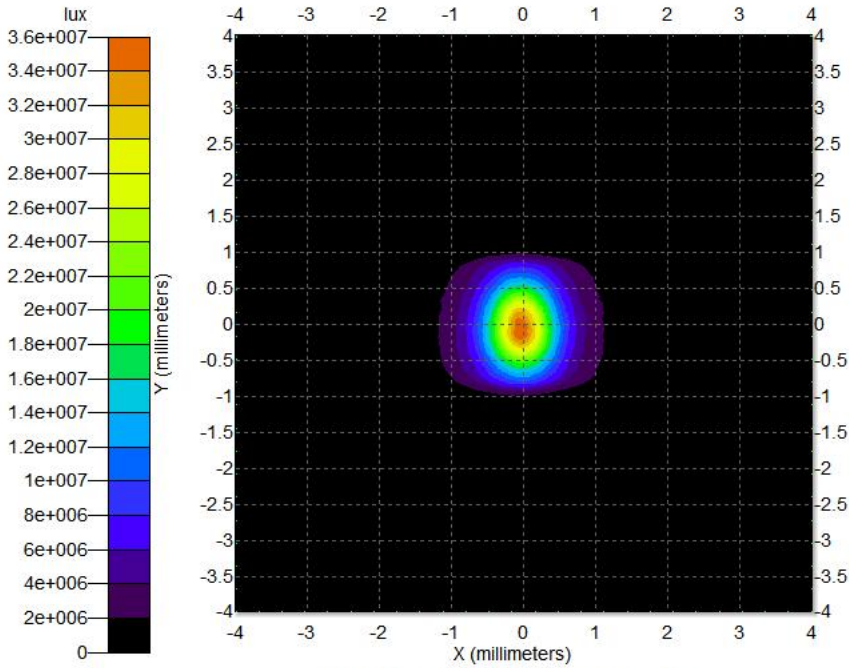


### Illuminance Distribution Diagram

Data Processing Software	Prosource10.2.7	Simulation Software	TracePro 2020
Number of Rays	1000,000	Receiver	8mm*8mm Distance :0.1mm
Smoothness of Illuminance Distribution Curve	50	Smoothness of Photometric Curve	20

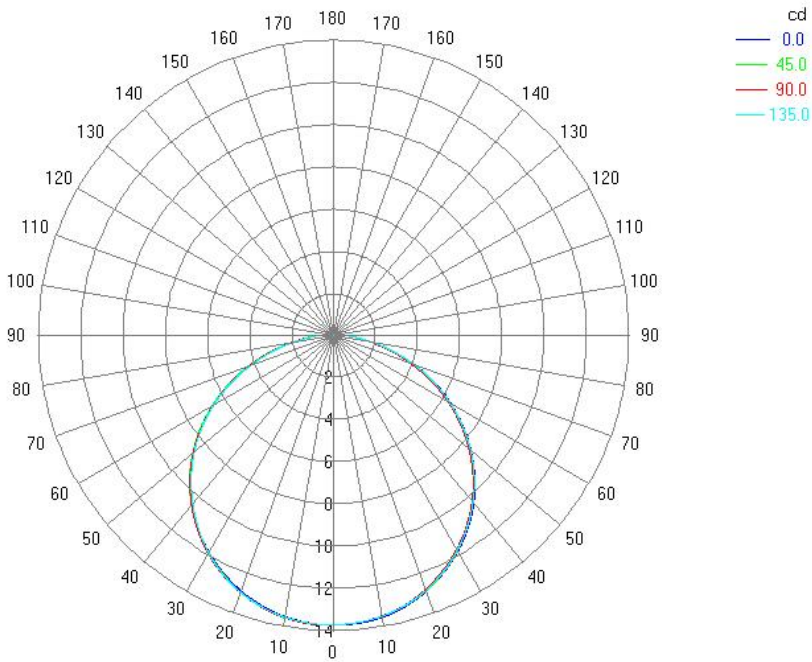
# Illuminance Distribution Diagram

Total - Illuminance Map for Incident Flux  
Block 1 Surface 1 Global Coordinates



Min:0, Max:3.5935e+007, Ave:6.4523e+005  
Total Flux:41.295 lm, Flux/Emitted Flux:0.99831, 4992076 Incident Rays

Polar Candela Distribution Plot  
Using Missed Rays



-----END-----