

# Radiant Source Model Report

## Source Model Information

### Source Description

Product ID:  
Source Type: LED  
Model Number: RF-A4E27-R22H-S1  
Serial Number:  
Manufacturer: Seoul semiconductor  
Hours Burned: 30min  
M.Rated Watts (E-in):M.Rated Lumens:  
measurement Type: Photometric  
SIG Orientation: SIG400: VerticalVoltage  
Source Description Notes:

### Scan Environment

Applied (volts): 2.76V  
Current Applied (amps): 350mA  
Watts Measured: 0.97W  
Cx: 0.6954 Cy: 0.3041  $\phi$ :46.72 lm

### Scan Results

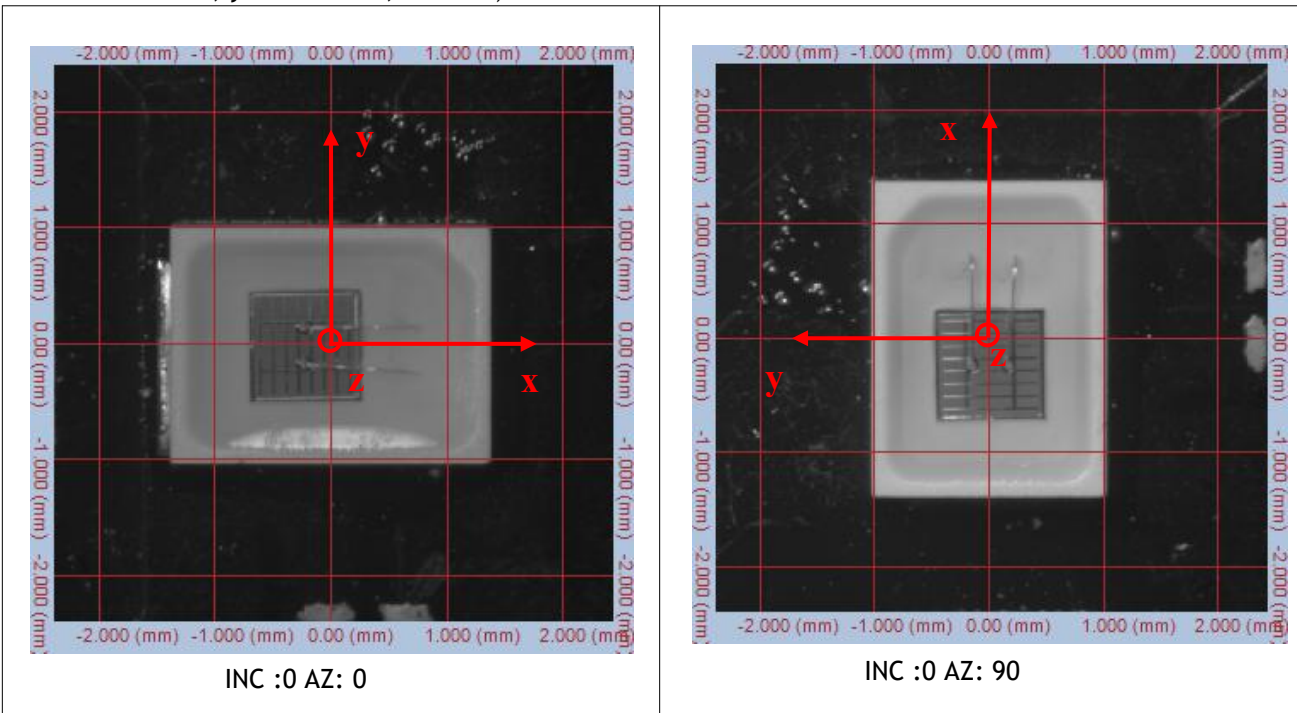
Date Scanned: 14-Mar-2024  
Number of Measurements: 2736  
Azimuth Range: 0 to 90, Step 5  
Polar Range: 0 to 360, Step 5  
Rated Lumens/Watts: 48.2 lm/W

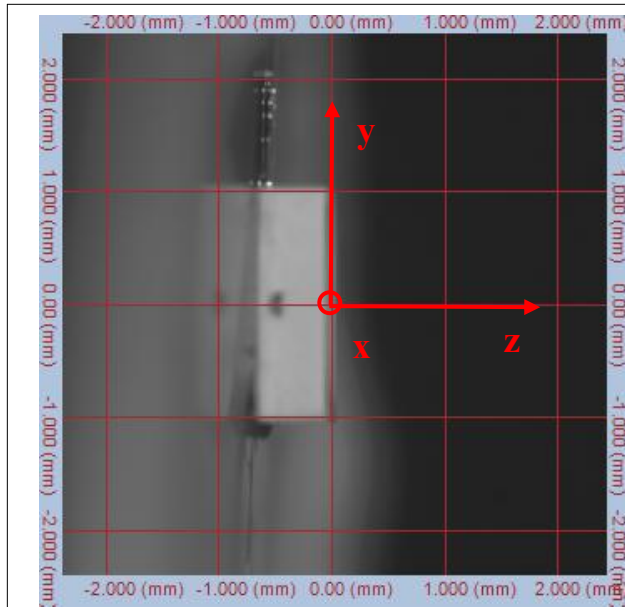
## Alignment Images

### Test Origin Coordinate Chart

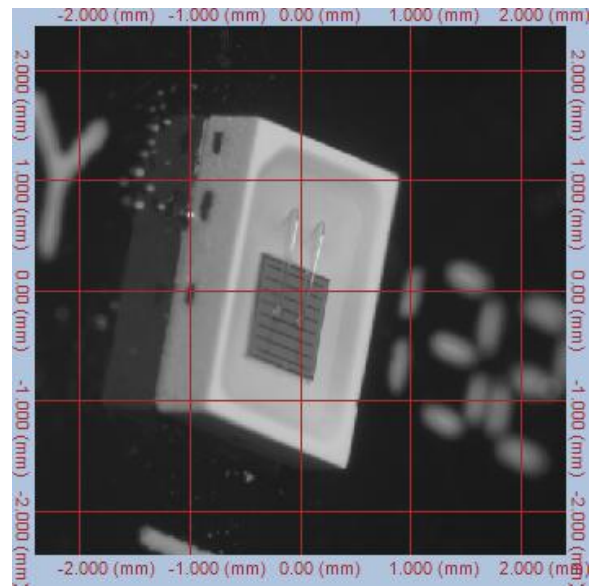
(The deviation of the position of the luminescent center relative to the center of the bracket.

x= -0.0105mm, y=00.005 mm, z= 0mm)





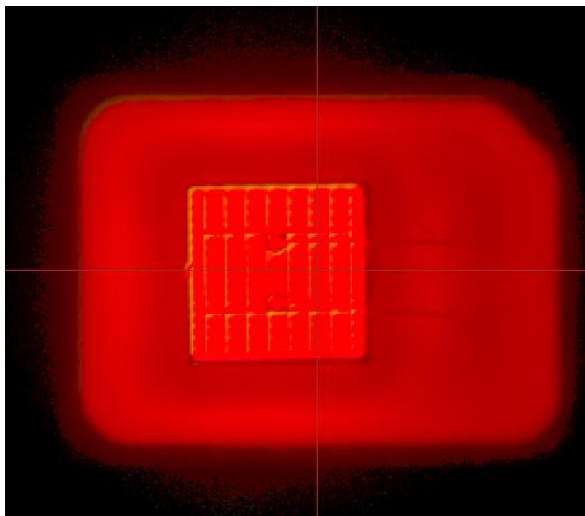
INC :90 AZ: 0



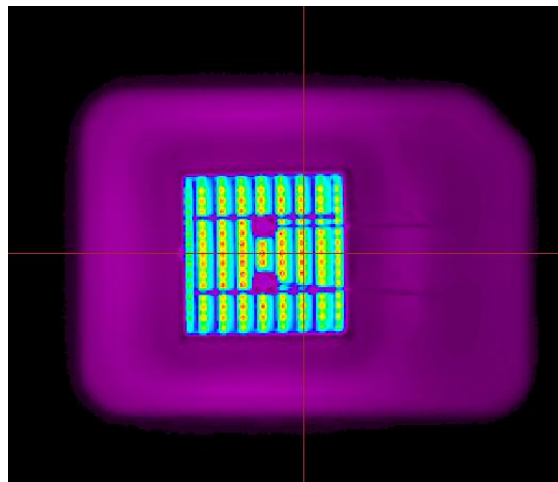
INC :50 AZ: 75

## Summary of Test Results

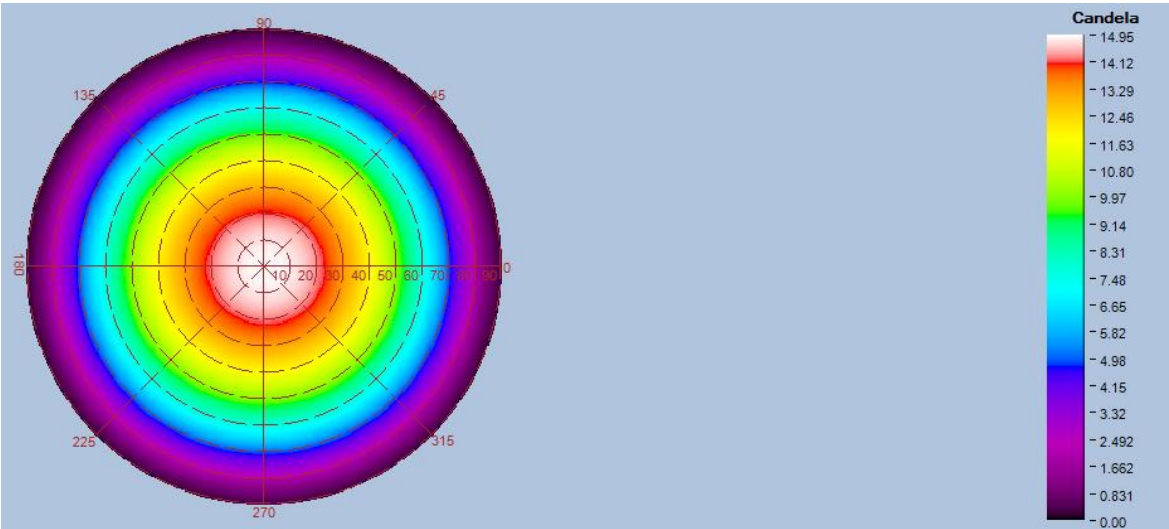
Top-View True Color Image



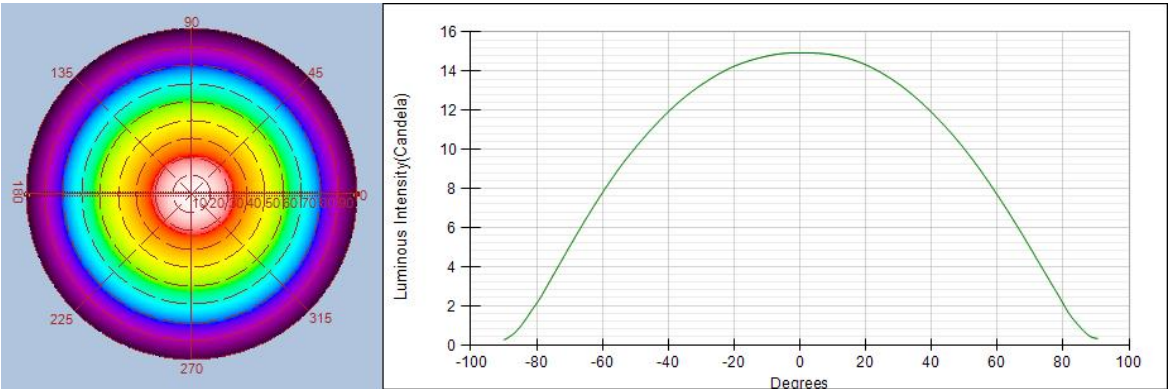
Top-View Luminance Image



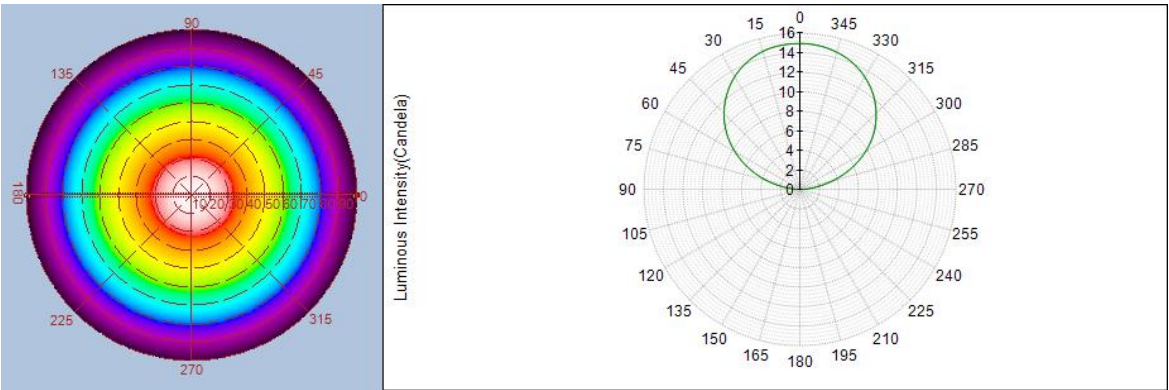
Near Field Radar Bitmap



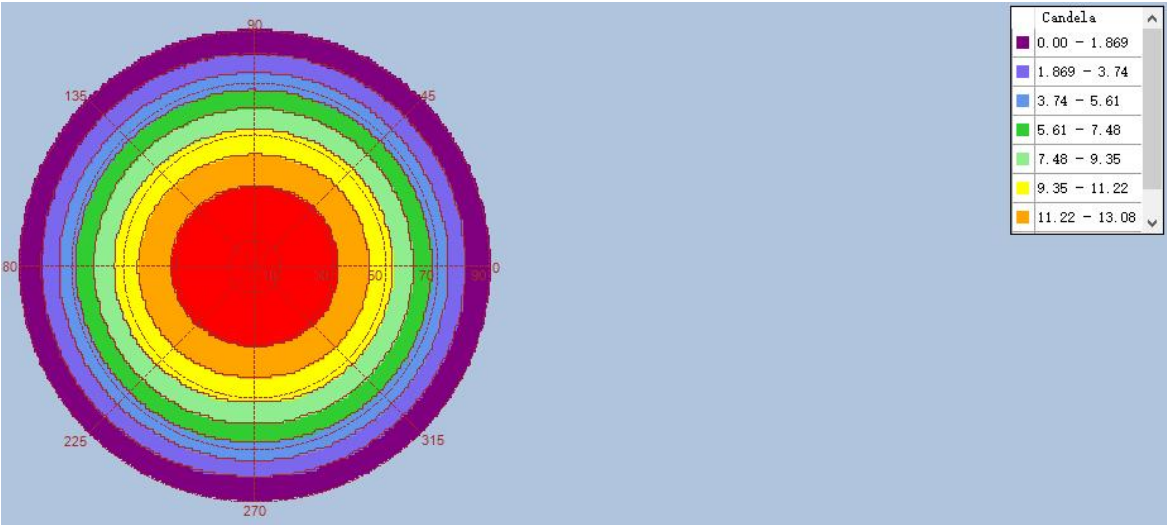
Intensity(traced to infinity) Cross Section Luminous Intensity(Candela)



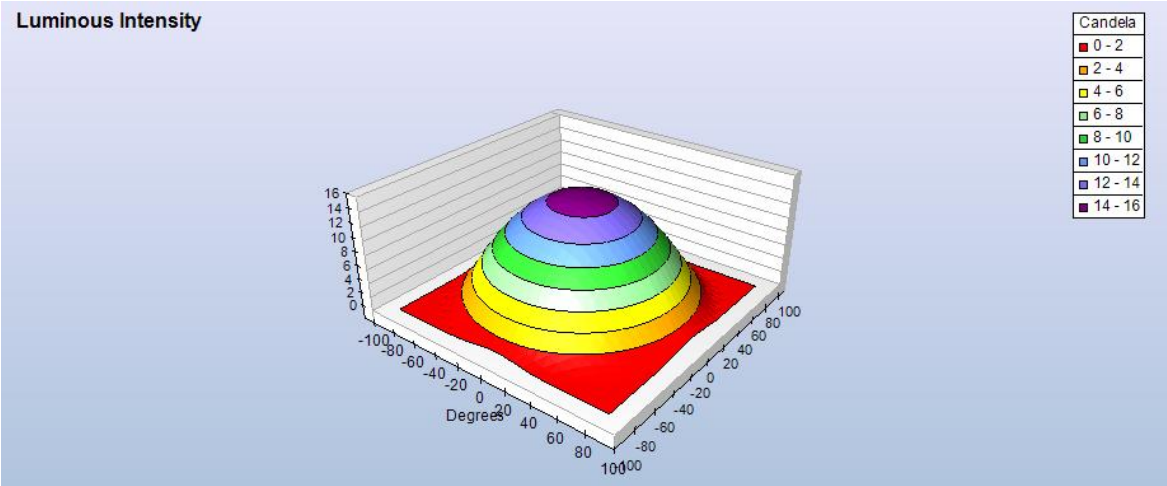
Intensity(traced to infinity) Cross Section Luminous Intensity(Candela)



Intensity(traced to infinity) Iso-Plot



Intensity(traced to infinity) 3D Iso-Plot



-END-