

Radiant Source Model Report

Source Model Information

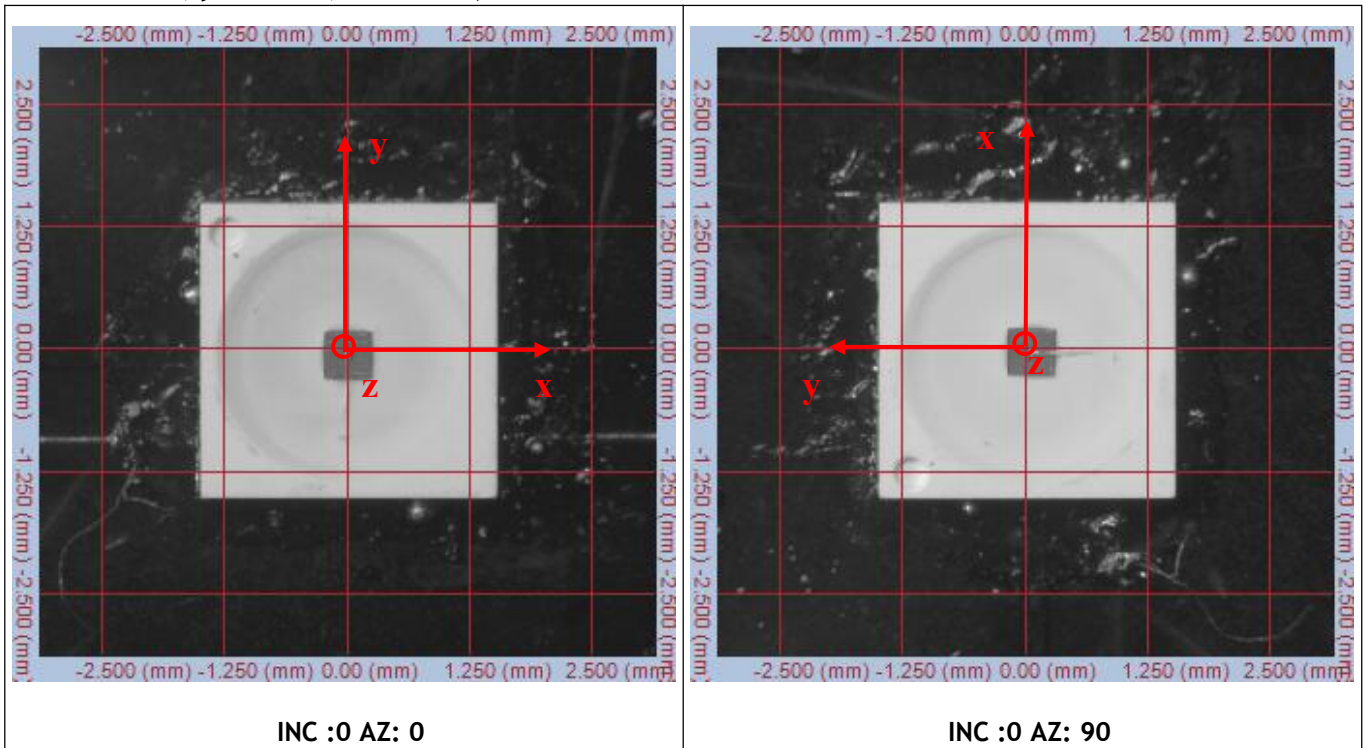
Source Description Product ID: Source Type: LED Model Number: 3030RED 0.5W Serial Number: Manufacturer: Refond Source Description Notes:	Scan Environment measurement Type: Photometric SIG Orientation: SIG400/ Vertical Applied (volts): 2.35V Current Applied (amps): 150mA Watts Measured: 0.3525W Cx: 0.6930 Cy: 0.3065 ϕ :29.43 lm Scan Results Date Scanned: 11-Sep-2023 Number of Measurements: 2736 Azimuth Range: 0 to 90, Step 5 Polar Range: 0 to 360, Step 5 Rated Lumens/Watts:83.49 lm/W
---	---

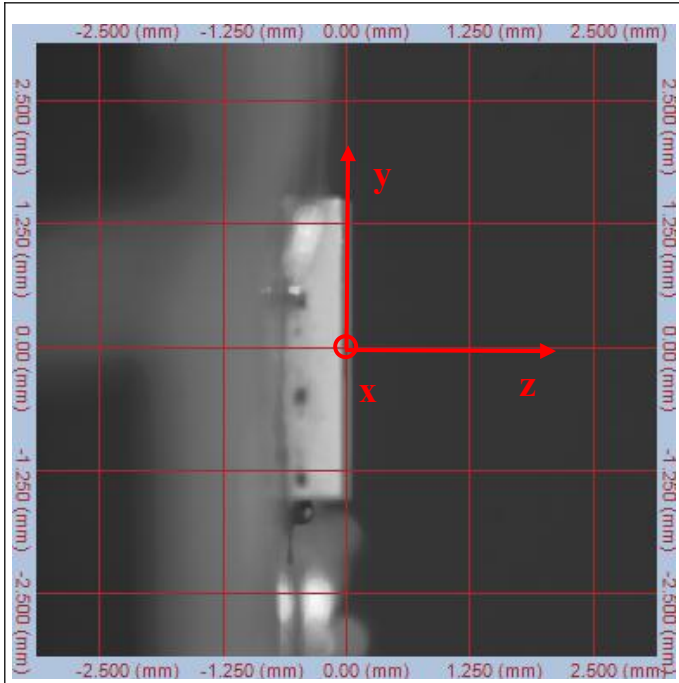
Alignment Images

Test Origin Coordinate Chart

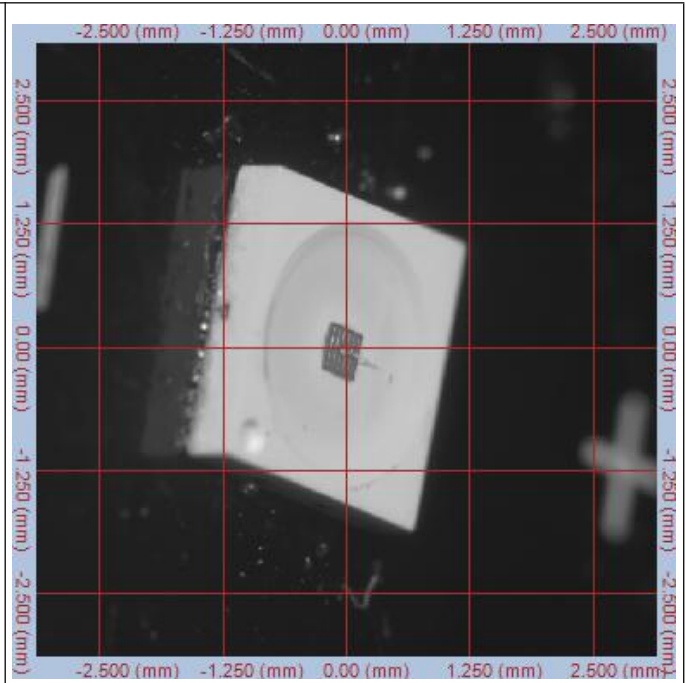
(The testing center is co-located with the center of the bracket.)

x= 0.00mm, y=0.00 mm, z= 0.00mm)





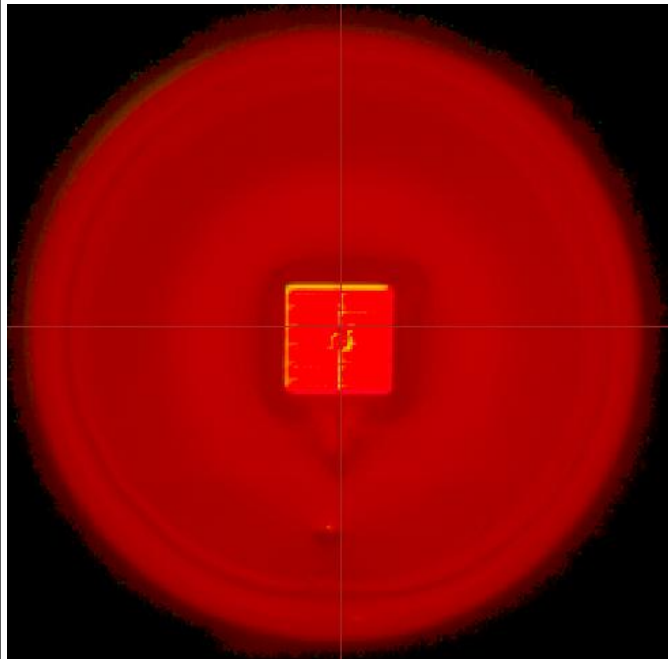
INC :90 AZ: 0



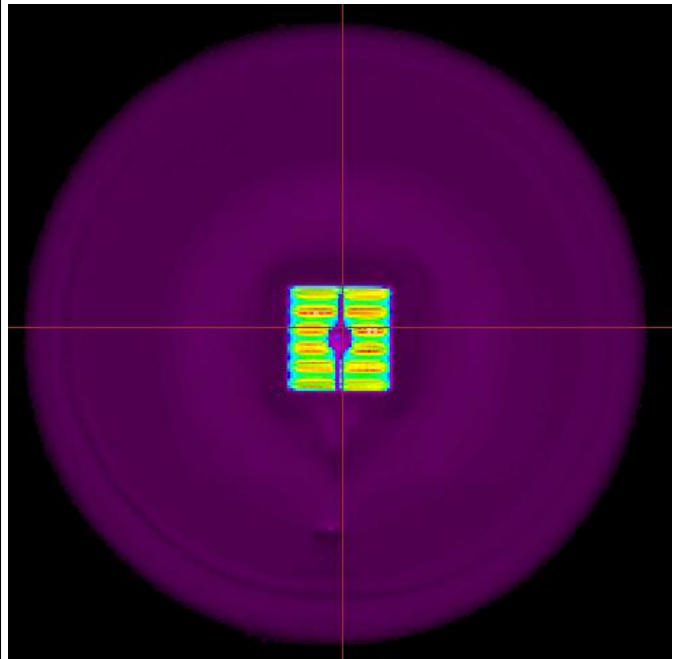
INC :50 AZ: 75

Summary of Test Results

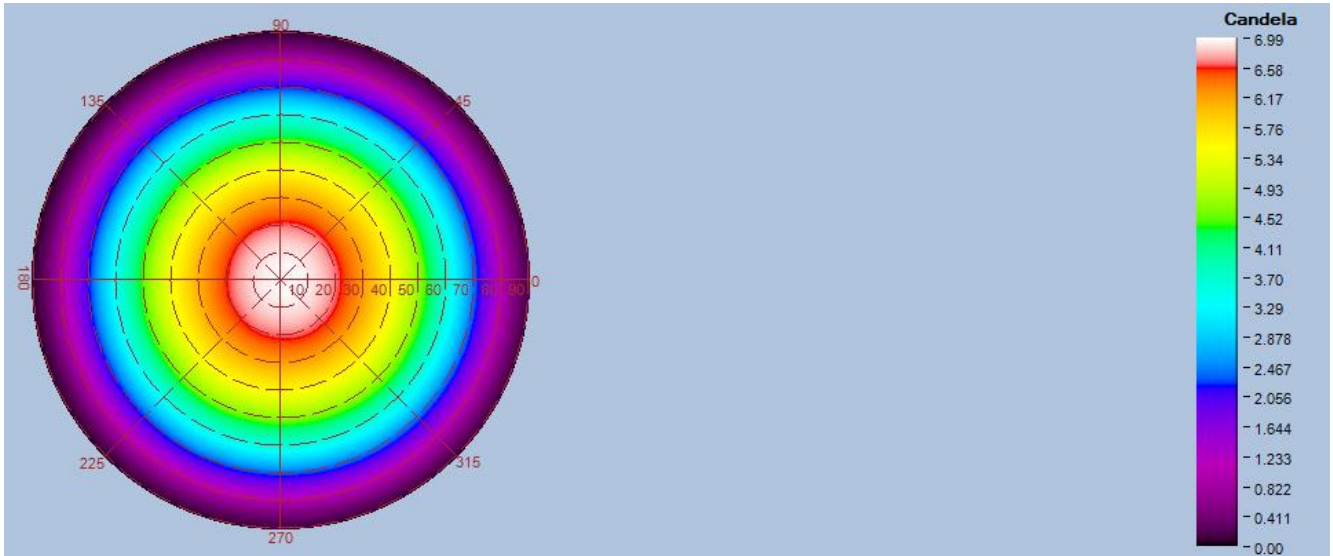
Top-View True Color Image



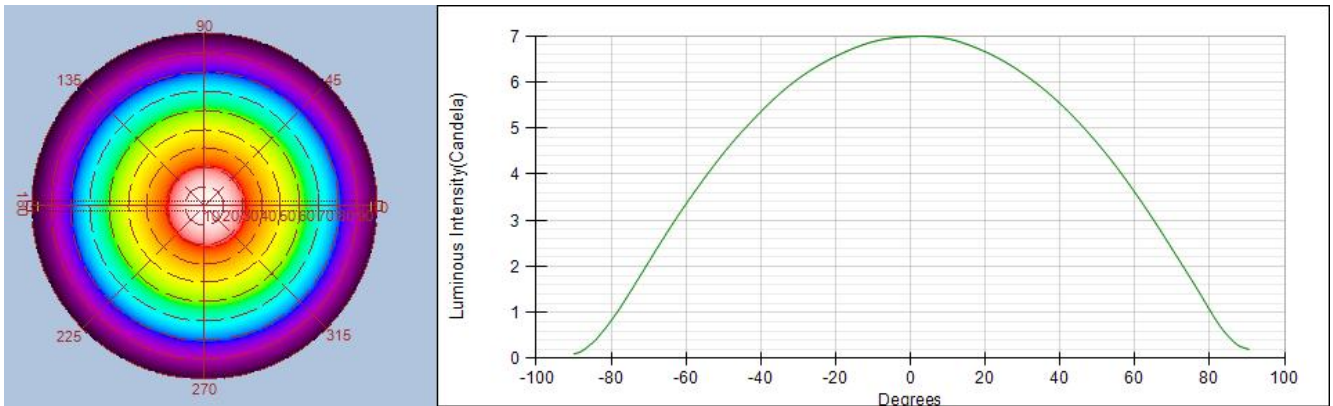
Top-View Luminance Image



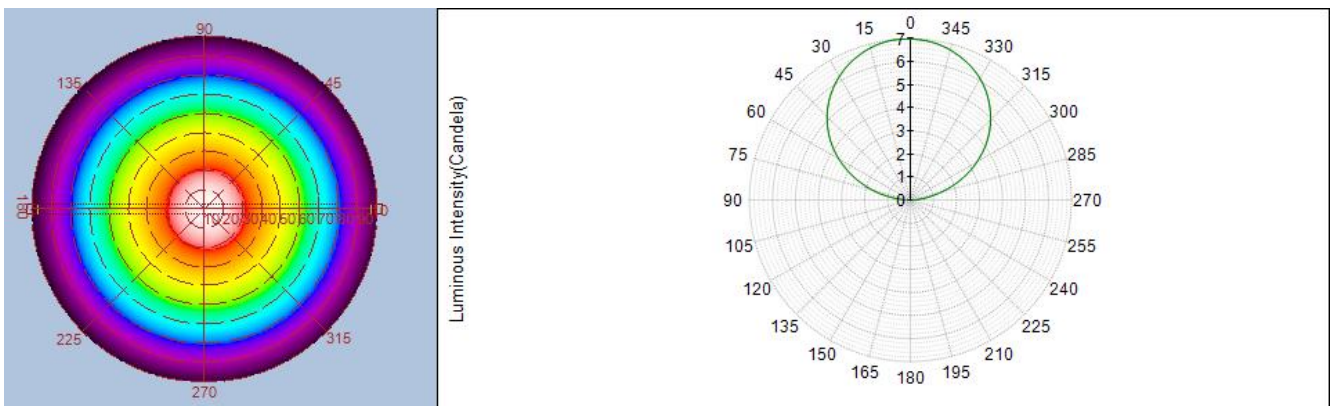
Intensity(traced to infinity)



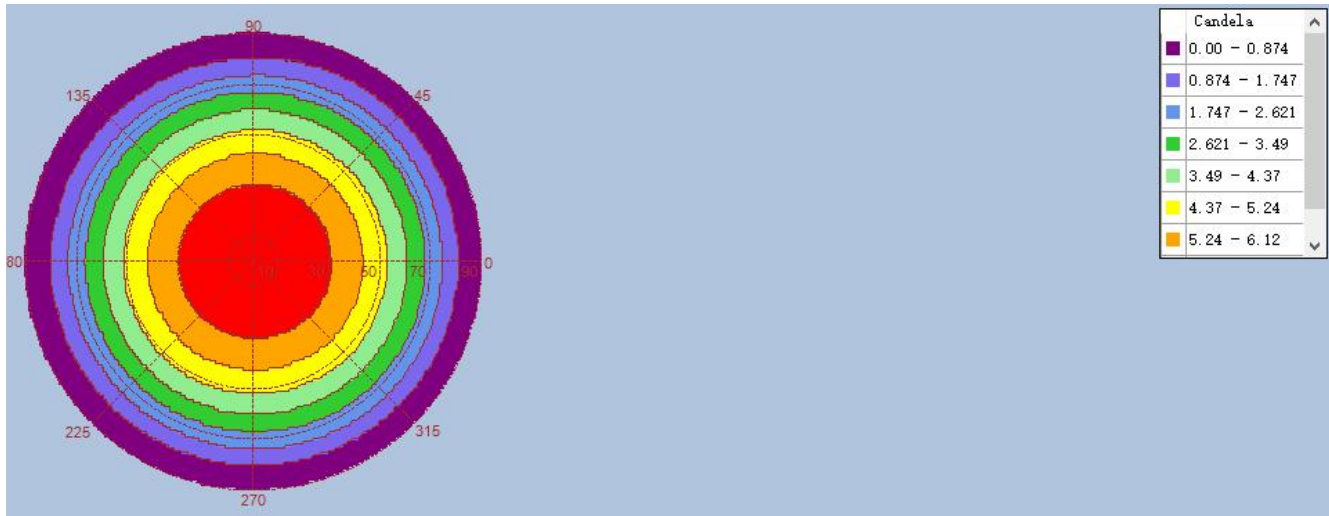
Intensity(traced to infinity) Cross Section Luminous Intensity(Candela)



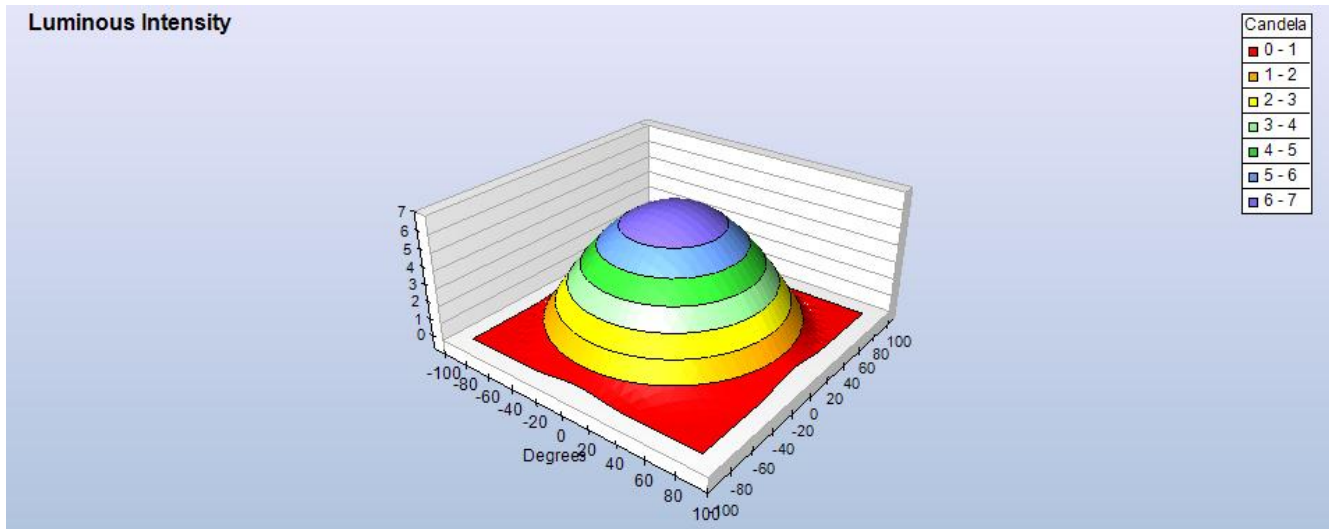
Intensity(traced to infinity) Cross Section Luminous Intensity(Candela)



Intensity(traced to infinity) Iso-Plot



Intensity(traced to infinity) 3D Iso-Plot

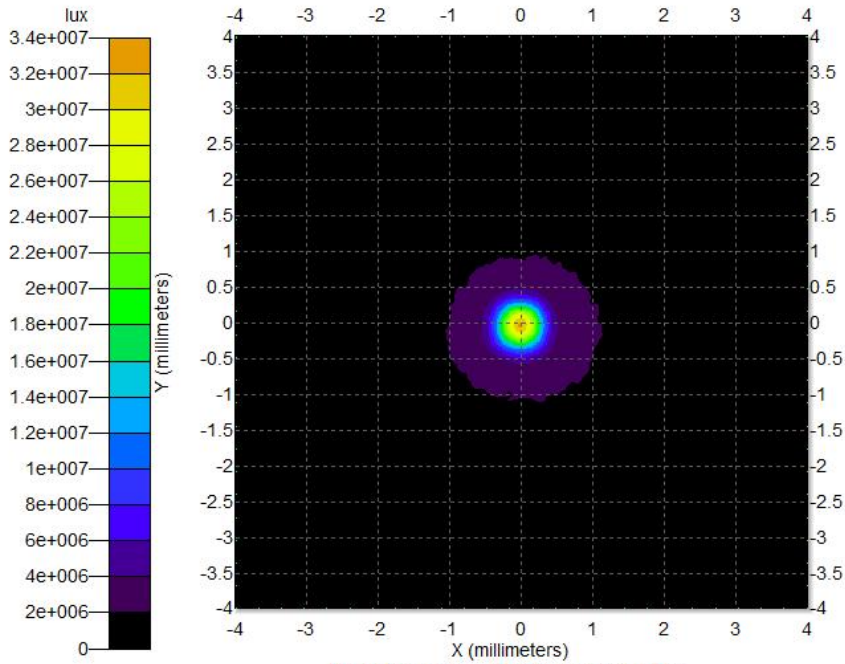


Illuminance Distribution Diagram

Data Processing Software	Prosource10.2.7	Simulation Software	TracePro 2020
Number of Rays	1000,000	Receiver	8mm*8mm Distance :0.1mm
Smoothness of Illuminance Distribution Curve	50	Smoothness of Photometric Curve	20

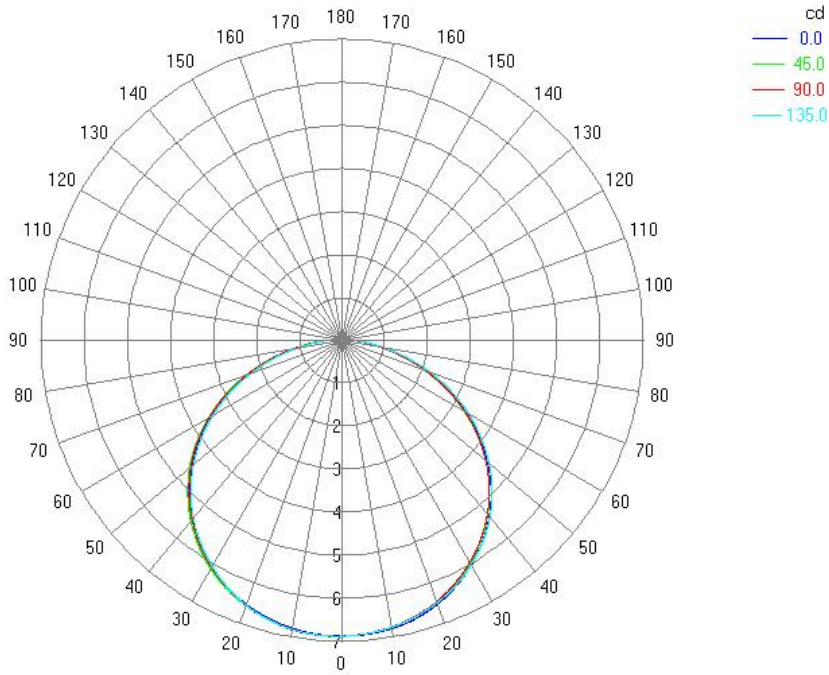
Illuminance Distribution Diagram

Total - Illuminance Map for Incident Flux
Block 1 Surface 1 Global Coordinates



Min:0, Max:3.262e+007, Ave:3.3581e+005
Total Flux:21.492 lm, Flux/Emitted Flux:0.99915, 4995647 Incident Rays

Polar Candela Distribution Plot
Using Missed Rays



-----END-----