

# Radiant Source Model Report

## Source Model Information

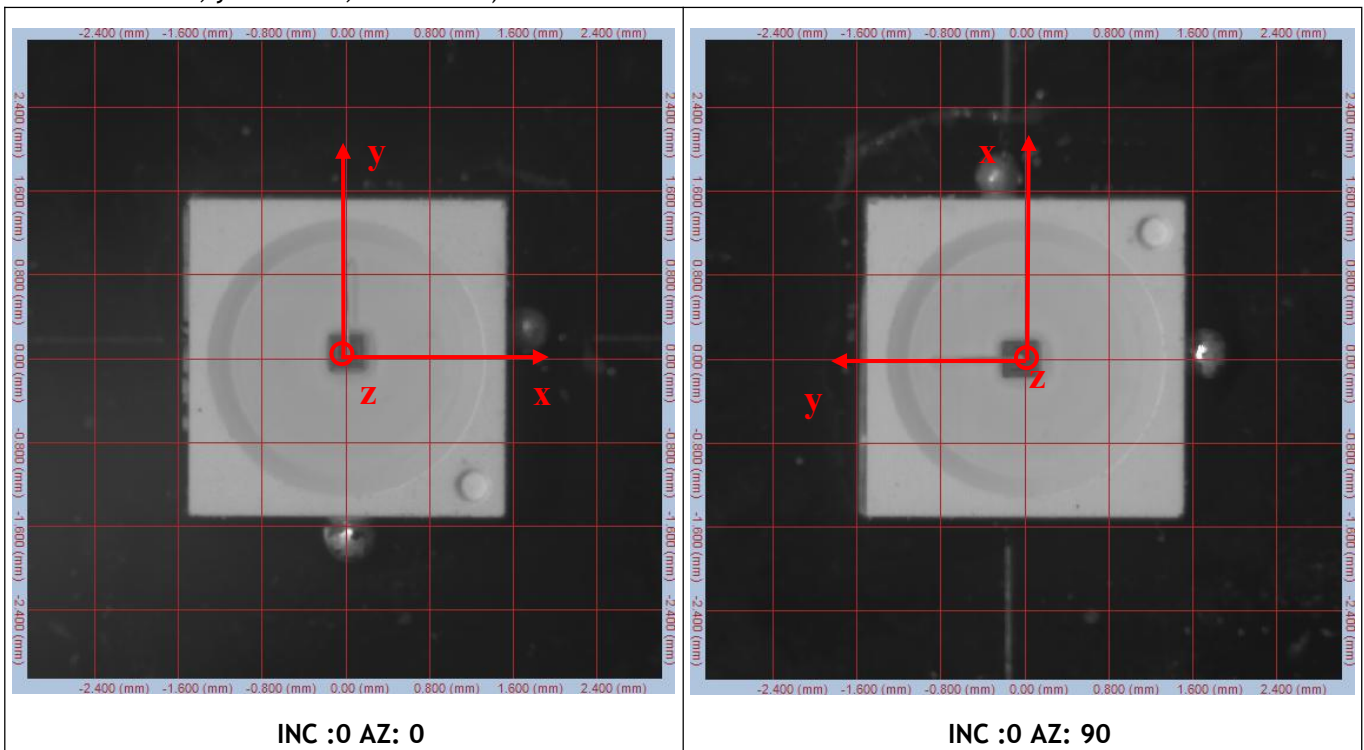
<b>Source Description</b> Product ID: Source Type: LED Model Number: E31-R158-R1 Serial Number: Manufacturer: REFOUD  Source Description Notes:	<b>Scan Environment</b> measurement Type: Photometric SIG Orientation: SIG400/ Vertical Applied (volts): 2.19V Current Applied (amps): 50mA Watts Measured: 0.11W Cx: 0.6811 Cy: 0.3184 $\phi$ :12.20 lm  <b>Scan Results</b> Date Scanned: 17-May-2024 Number of Measurements: 2736 Azimuth Range: 0 to 90, Step 5 Polar Range: 0 to 360, Step 5 Rated Lumens/Watts:111 lm/W
--	--

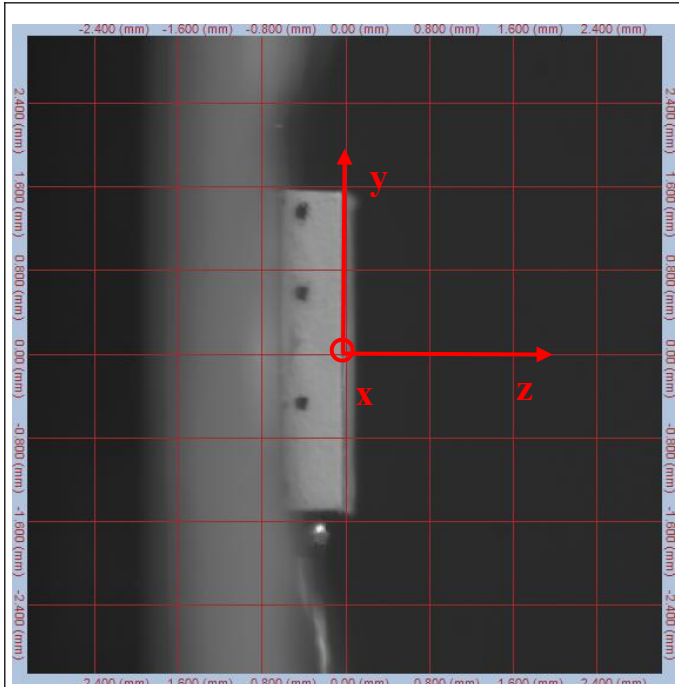
## Alignment Images

### Test Origin Coordinate Chart

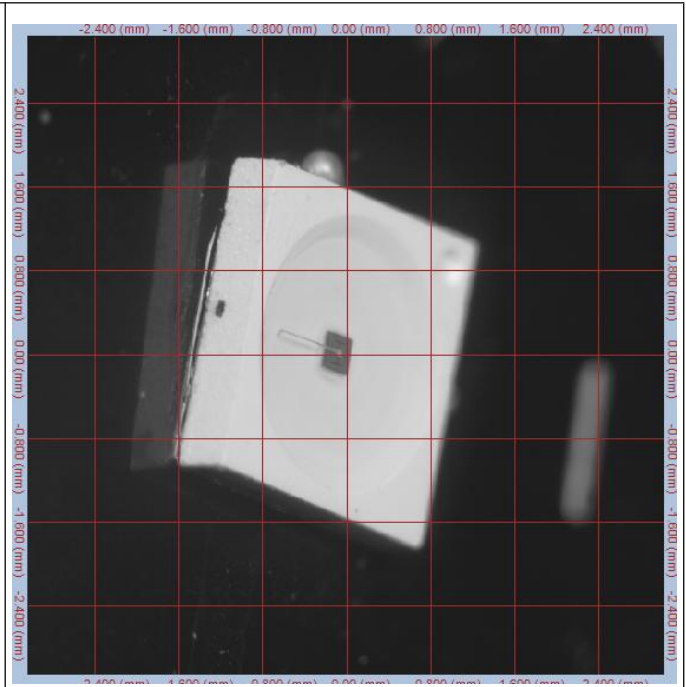
(The deviation of the position of the luminescent center relative to the center of the bracket.

x=-0.021mm, y=0.00 mm, z= 0.00mm)





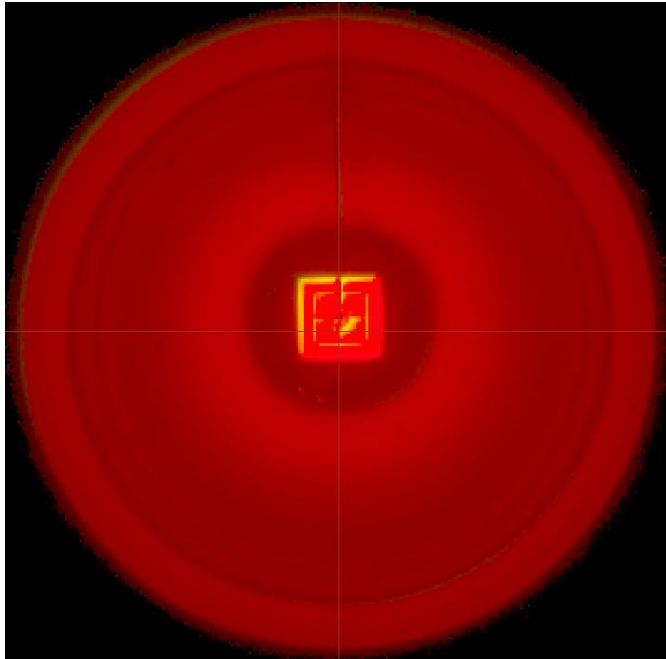
INC :90 AZ: 0



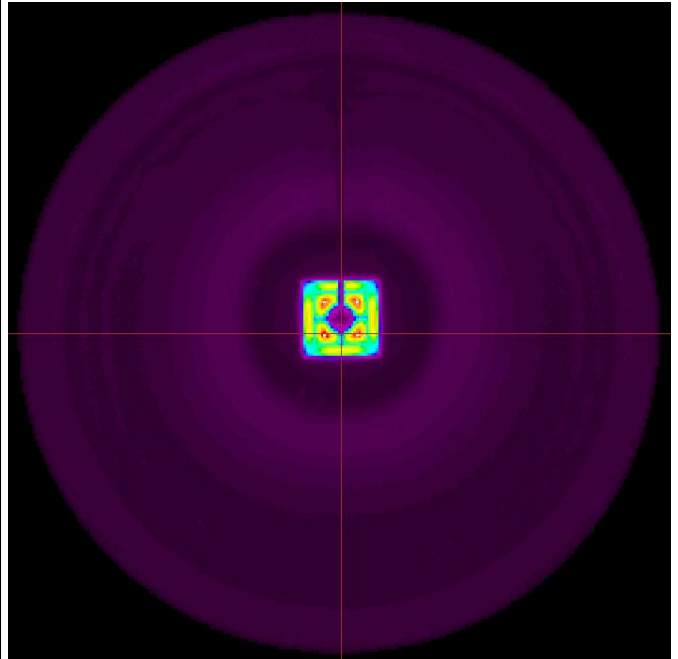
INC :50 AZ: 75

## Summary of Test Results

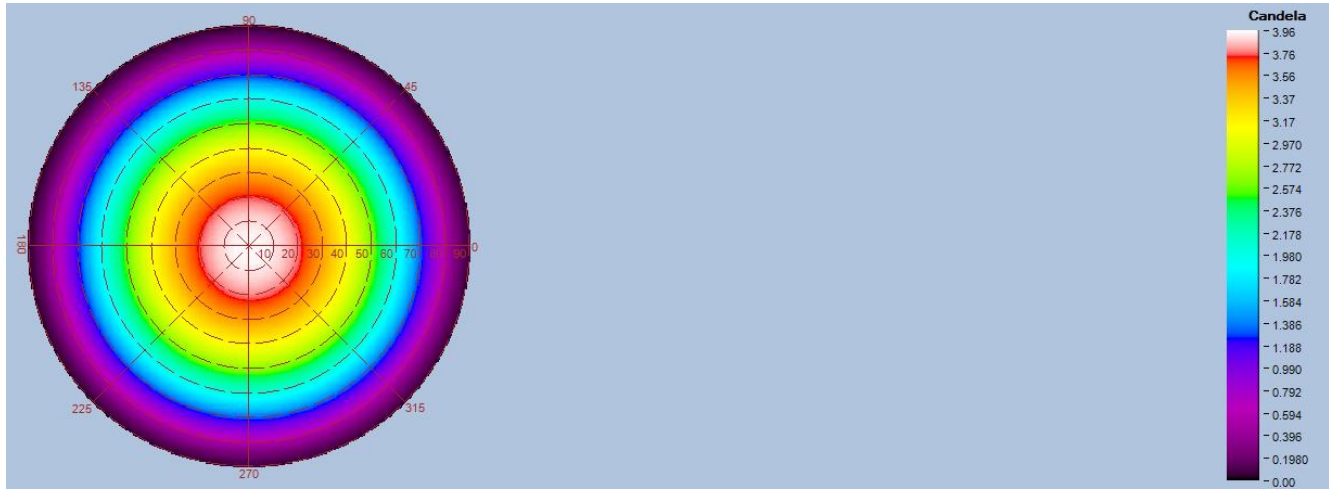
Top-View True Color Image



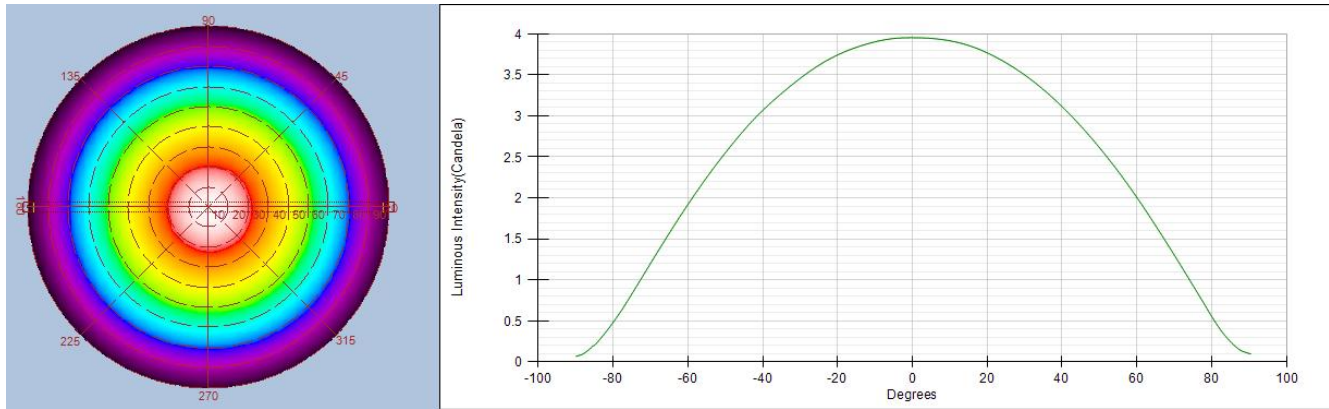
Top-View Luminance Image



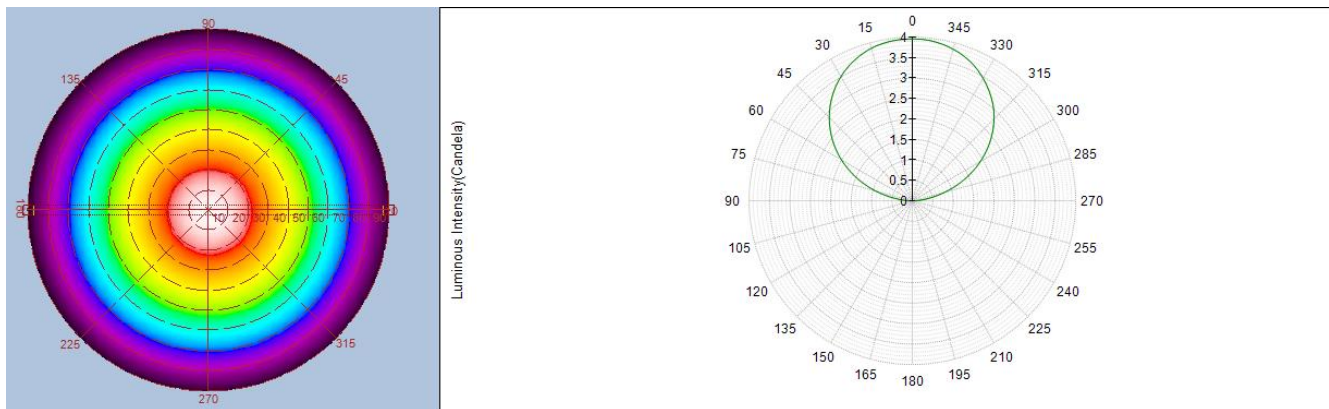
**Intensity(traced to infinity)**



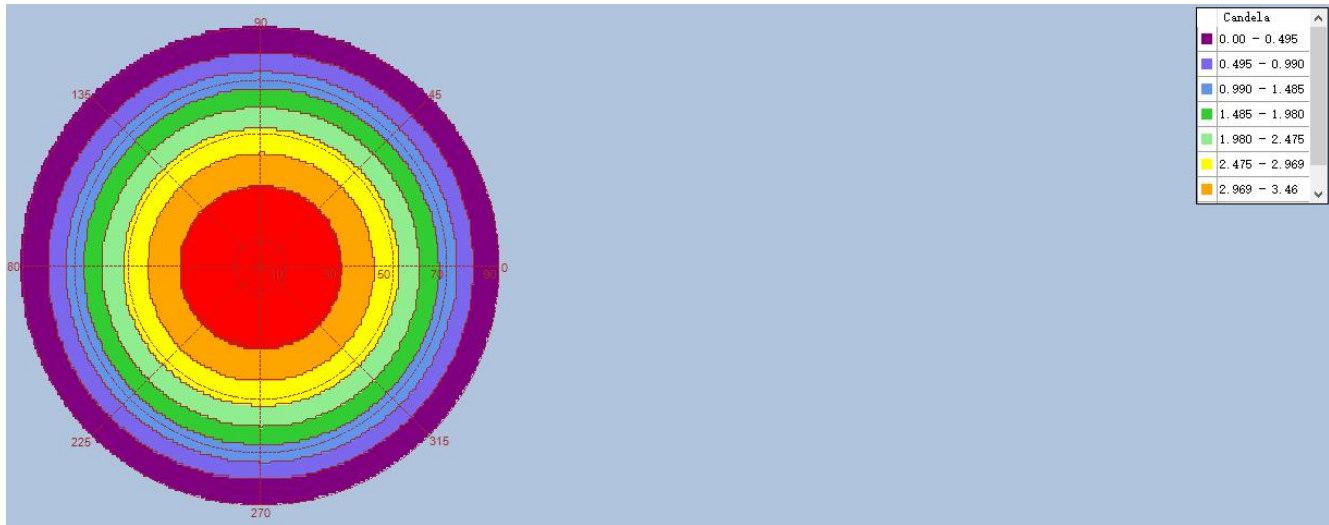
**Intensity(traced to infinity) Cross Section Luminous Intensity(Candela)**



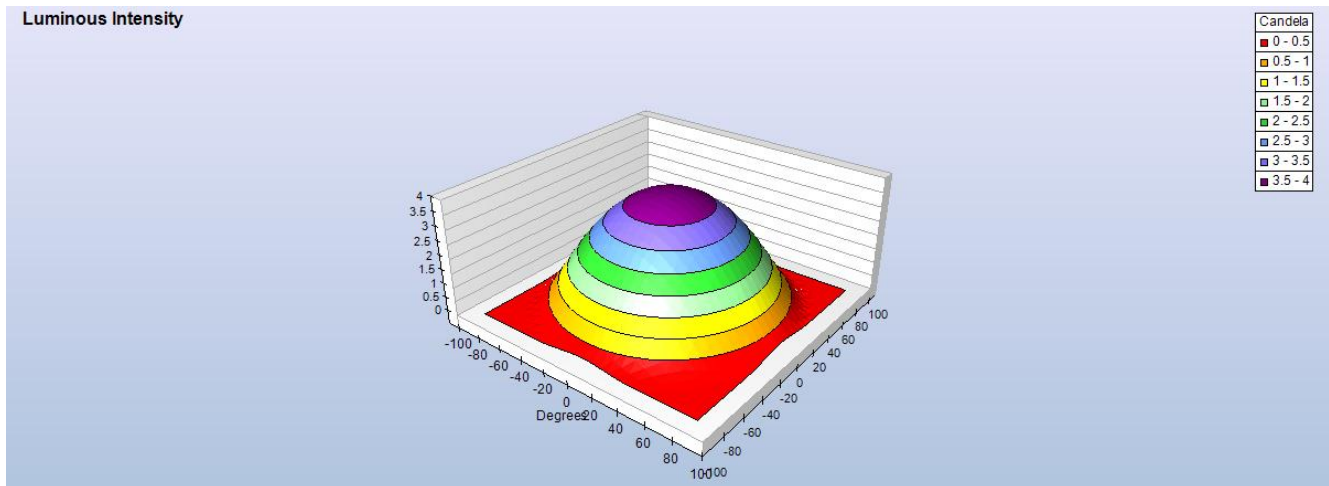
**Intensity(traced to infinity) Cross Section Luminous Intensity(Candela)**



### Intensity(traced to infinity) Iso-Plot



### Intensity(traced to infinity) 3D Iso-Plot

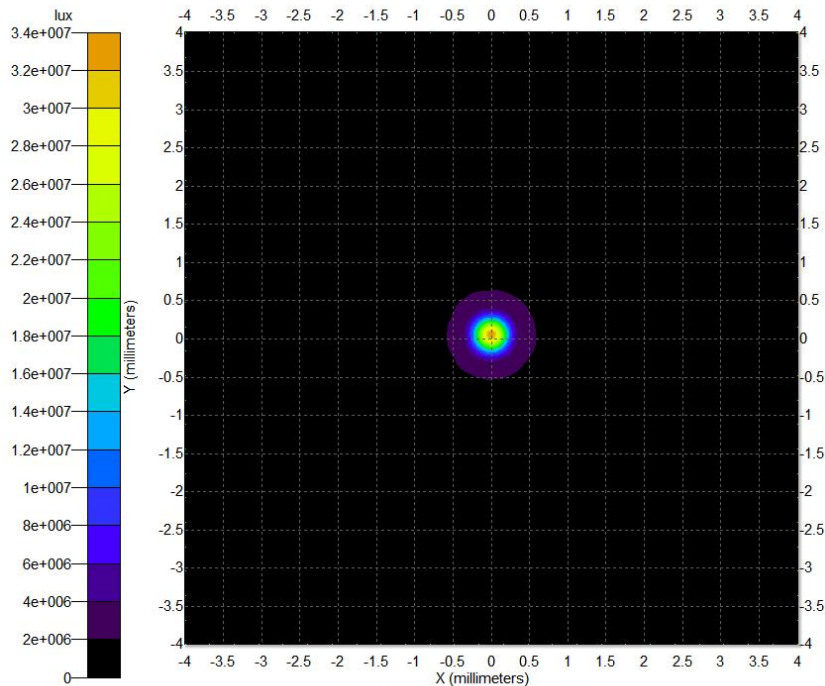


### Illuminance Distribution Diagram

Data Processing Software	Prosource10.2.7	Simulation Software	TracePro 2020
Number of Rays	1000,000	Receiver	8mm*8mm Distance :0.1mm
Smoothness of Illuminance Distribution Curve	50	Smoothness of Photometric Curve	20

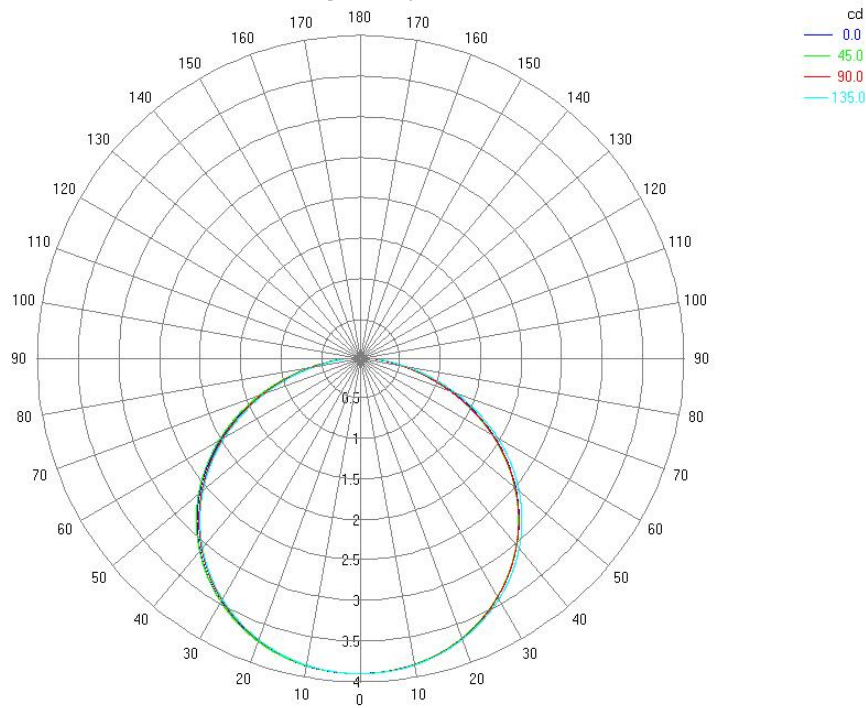
# Illuminance Distribution Diagram

Total - Illuminance Map for Incident Flux  
Block 1 Surface 1 Global Coordinates



Min:0, Max:3.3076e+007, Ave:1.9059e+005  
Total Flux:12.198 lm, Flux/Emitted Flux:0.99944, 4997069 Incident Rays

Polar Candela Distribution Plot  
Using Missed Rays



-----END-----

---